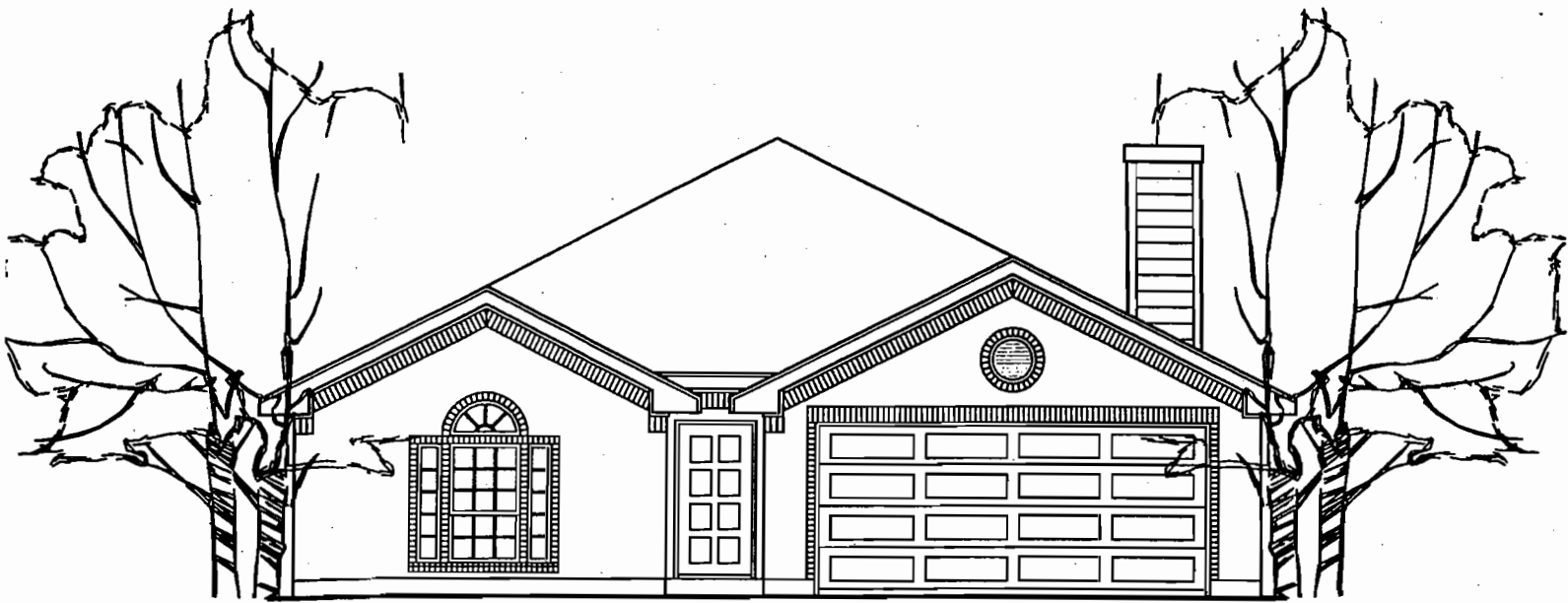


FLOOR PLANS SUBJECT TO CHANGE WITHOUT NOTICE. ROOM SIZES ARE APPROXIMATE.

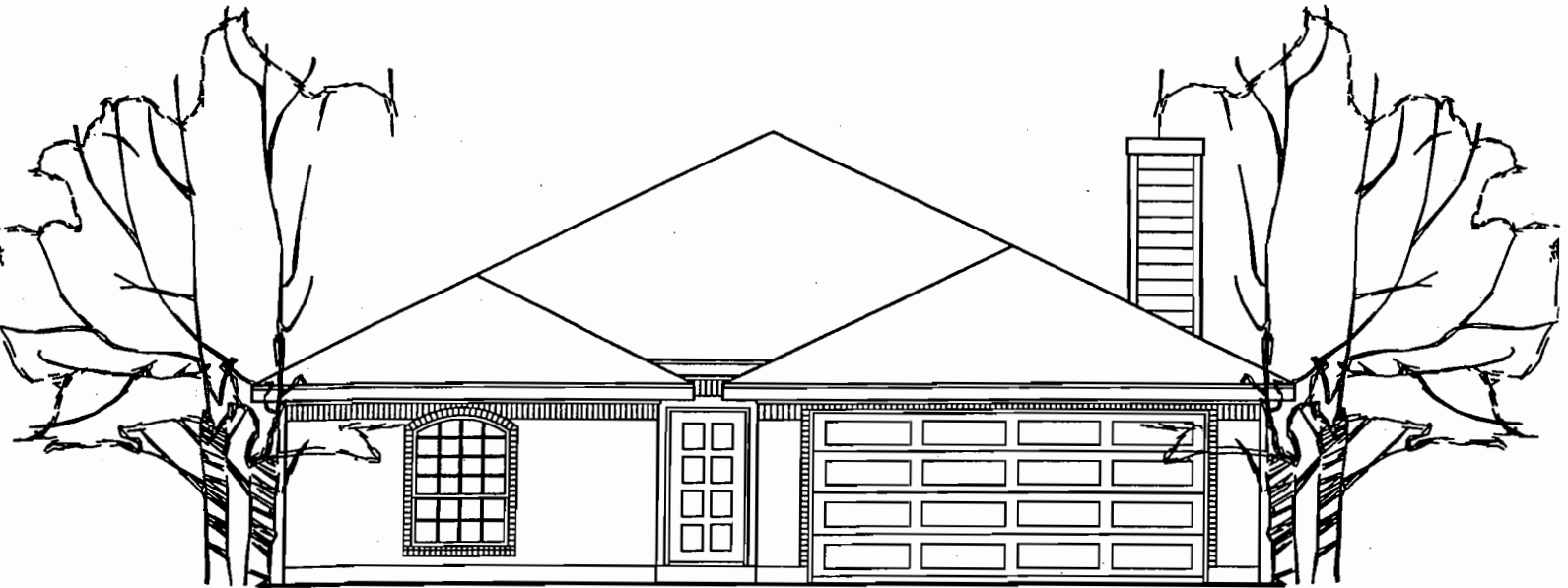
FLOOR PLAN "1"
1/8" = 1'0"

1963 SQ. FT.
MJW#01184KEY



FRONT ELEVATION "1A"

1/8" = 1'0"



FRONT ELEVATION "1B"

1/8" = 1'0"



Key Life HOMES, Inc.

FLOOR PLANS SUBJECT TO CHANGE WITHOUT NOTICE. ROOM SIZES ARE APPROXIMATE.

1963 SQ. FT.
MJW*01184KEY